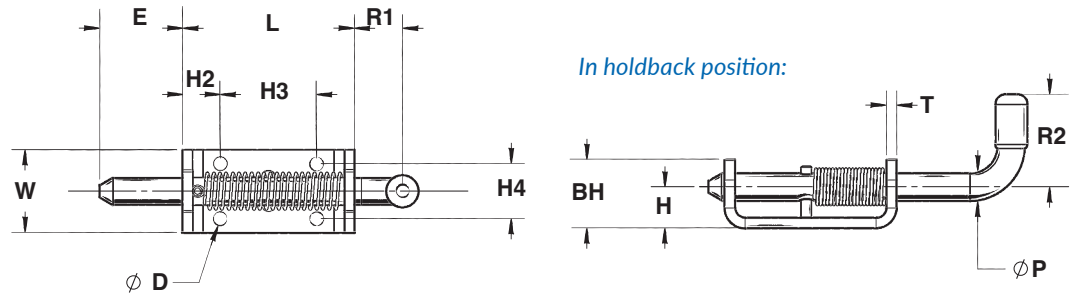
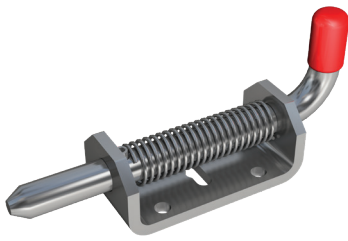


# Heavy Duty Spring Latch Series 789



The Paneloc 789 Series Spring Latch features a 1/2" pin with a holdback.

These large rugged latches feature a closed knuckle for added durability and strength, making them well-suited for truck and trailer bodies.

PIN			BODY			
P	Pin Diameter	.500	L	Length	3.12	
*	E	Extension	1.50	W	Width	1.50
R1	Handle Extension	.870	T	Material Thickness	.187	
R2	Handle Extension	1.68	H	Height	.750	
			BH	Body Height	1.25	
			H2	Hole Location	.690	
			H3	Hole Location	1.75	
			H4	Hole Location	1.00	
			*	D	Hole Diameter	.250

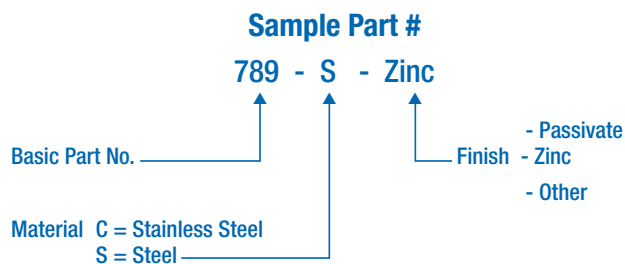
## MATERIAL

Readily available in plain steel with zinc plating, though it can also be purchased in stainless.

## FINISH

Most commercial finishes are available, including zinc on steel, passivate and electropolishing on stainless steel.

## ORDERING INFORMATION



\*Designates dimensions that can be altered to meet your specifications.  
Special forms, hole sizes or welding projections are available to your specifications.