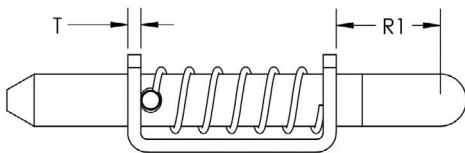
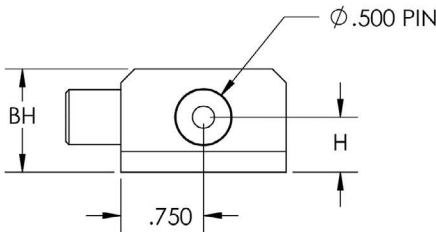
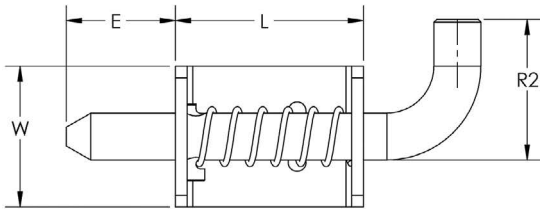
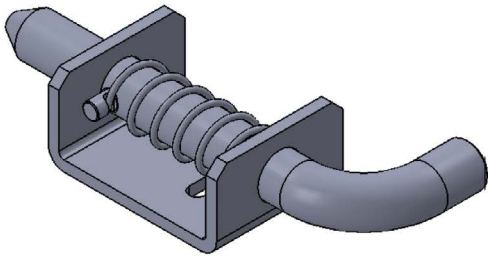


## Heavy Duty Spring Latch Series 787



### PIN

P	Pin Diameter	.500	
*	E	Extension	1.16
	R1	Handle Extension	1.00
	R2	Handle Extension	1.50

### BODY

L	Length	2.00
W	Width	1.50
T	Material Thickness	.125
H	Height	.500
BH	Body Height	.940

### MATERIAL

Readily available in plain steel, though it can also be purchased in stainless.

### FINISH

Most commercial finishes are available, including zinc on steel, passivate and electropolishing on stainless steel.

### ORDERING INFORMATION

**Sample Part #**  
787 - S - Zinc

Basic Part No. \_\_\_\_\_ ↑  
Material C = Stainless Steel  
S = Steel \_\_\_\_\_ ↑

Finish - Passivate  
- Zinc  
- Other

The Paneloc 787 Series Spring Latch features a 1/2" pin with a holdback.

These large rugged latches feature a closed knuckle for added durability and strength making them well suited for truck and trailer bodies.

\*Designates dimensions can be altered to meet your specifications. Special forms, hole locations and sizes or welding projections are available to your specifications.