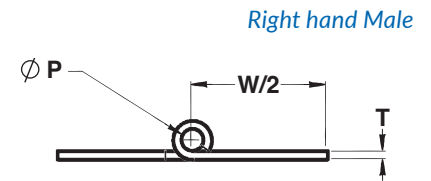
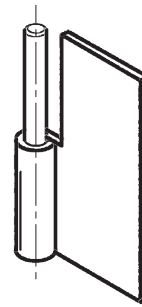
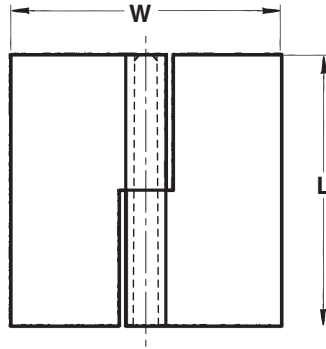
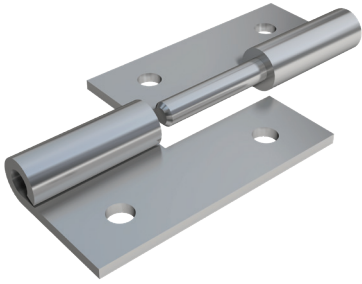


Slip Joint Hinges



Slip Joint Hinges, also known as "take-apart" hinges, are well-suited for applications such as removable doors and panels.

They are comprised of a male leaf with a fixed pin and female leaf with no pin, and available in a right hand or left hand configuration.

These parts are readily available in steel or stainless steel, though they can be reproduced from virtually any desired metal or alloy. Most common finishes include zinc on steel, passivate and electropolish on stainless, and anodize on aluminum.

Most hinges are stocked without holes or with two holes per leaf, and custom hole patterns can also be requested.

PART NUMBER	THICKNESS	LENGTH	WIDTH	PIN DIAMETER
737	.050	1.50	1.44	.120
371	.060	1.50	1.50	.125
344	.062	2.00	1.50	.125
631	.062	2.00	2.00	.187
588	.072	2.00	1.68	.125
614	.075	2.50	1.88	.187
614W	.075	2.50	2.50	1.87
589	.080	2.00	1.68	.187
589W	.080	2.00	2.00	1.87
728	.080	2.00	1.50	.250
372	.090	2.50	2.50	.250
749	.090	3.00	2.00	.187
746	.093	2.50	2.50	.187
606	.093	3.00	3.00	.250
753	.093	4.00	3.00	.250