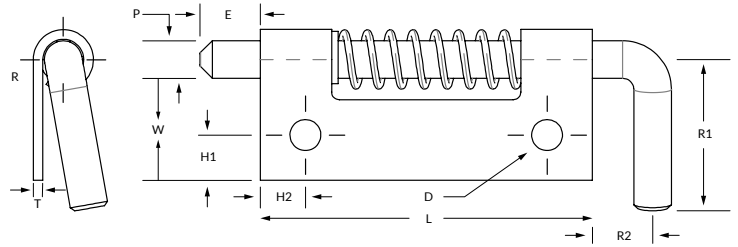


Spring Latch Series 711



PIN

P	Pin Diameter	.125
* E	Extension	.187
* R1	Handle Length	.437
* R2	Handle Extension	.187

BODY

L	Length	.875
* W	Width A	.375
	Width B	.500
T	Thickness	.040
* H1	Hole Location	.156
* H2	Hole Location	.156

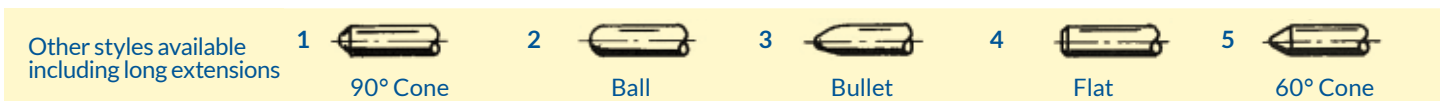
MATERIAL

	Steel	Stainless	Aluminum
Designation	S	C	A
Pin Type	12L14	303	SS
Body	1010	304	5052
Spring	302	302	302
C-Ring	PH15-7 MO	PH15-7 MO	PH15-7 MO

MODEL

R	Right Handed
L	Left Handed
U	Unassembled

POINT STYLE



FINISH

Most commercial finishes are available including zinc plate on steel, passivate and electropolishing on stainless steel, and anodize on aluminum.

ORDERING INFORMATION

Sample Part #
711 - C L B 3 - N.H. - Electropolish

Basic Part No. → 711
 Material (Stainless Steel) → C
 Model (Left Hand) → L
 Body Width (.500) → B
 Point Style (Bullet) → 3
 No Holes → N.H.
 Finish → Electropolish

*Designates dimensions that can be altered to meet your specifications.