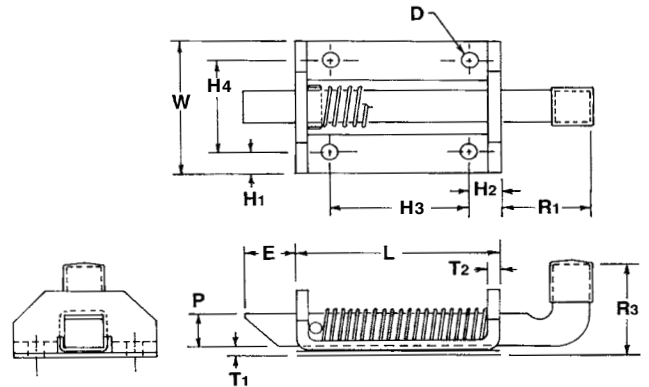
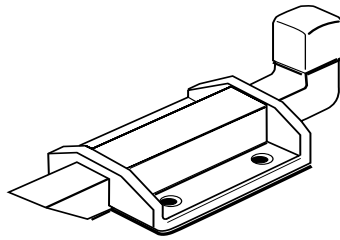


## Slam Latch Series 709



This rugged slam latch is ideal for applications that require a quick and effortless locking mechanism, such as truck and trailer doors, drawers and tailgates, as well as medical equipment and aircraft applications.

To engage simply “slam” the door shut. The spring-loaded pin is square with an angled edge that smoothly retracts as it engages with the keeper and then extends back into place in a locked position. To release, grip the handle and pull back.

Special forms, offsets, hole sizes or welding projections are available to your specifications.

\*Designates dimensions can be altered to meet your specifications.

### PIN

P	Pin Size	.500
* E	Extension	.750
R1	Handle Length	1.250
R3	Handle Extension	1.375

### BODY

L	Length	2.875
* W	Width	2.000
T1	Thickness	.190
T2	Thickness	.190
* H1	Hole Location	.312
* H2	Hole Location	.468
H3	Hole Location	1.930
H4	Hole Location	1.375
* D	Hole Diameter	.265

### MATERIAL

C = Stainless S = Steel

### FINISH

Most commercial finishes are available, including zinc on steel, passivate and electropolishing on stainless steel.

### ORDERING INFORMATION

