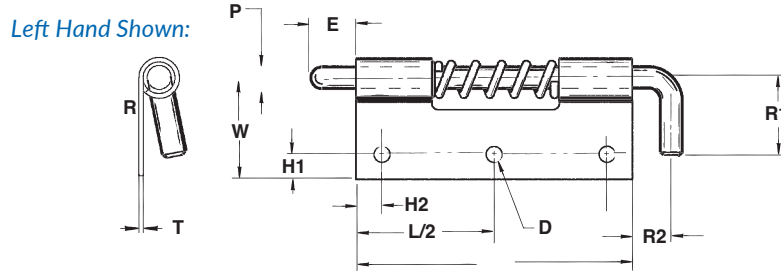
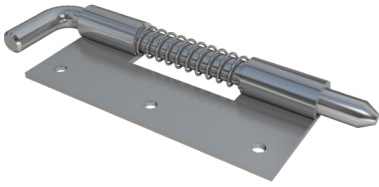


PANELOC Spring Latch Series

Design Specifications



The Spring Latch Difference

Paneloc's spring-loaded latches are a reliable, high quality solution for applications where both secure closure and easy access are required. Primarily used on hinged doors and panels, the simple barrel bolt design has many practical uses throughout the electronic cabinet and industrial equipment industries, including inspection doors and access panels.

Paneloc offers an extensive selection of high quality materials, widths, hole patterns, forms and pin styles to choose from. Easy and inexpensive installation can be accomplished using screws, rivets, or by welding. A unique design feature of Paneloc's latches is a special C-Ring that acts as a positive-stop retainer, preventing spring over-travel or snagging. The C-Ring also provides secure pin retention and eliminates jamming. The tempered spring is properly tensioned to provide smooth positive pin release and return.

PART NUMBER	711	712	713	714	715	716	718	723
-------------	-----	-----	-----	-----	-----	-----	-----	-----

PIN								
P Pin Diameter	.125	.156	.187	.250	.187 SQ	.250	.375	.250
* E Extension	.187	.250	.375	.500	.250	1.250	1.00	.625
* R1 Handle Length	.437	.625	.687	.812	.750	.810	1.50	.812
* R2 Handle Extension	.187	.250	.312	.375	.875	.380	1.50	.430

BODY								
L Length	.875	1.375	2.000	2.75	.875	3.50	4.00	2.75
* W Width A	.375	.500	.625	.75	.500	.720	1.50	.955
Width B	.500	.750	.875	1.000	-	-	-	-
T Thickness	.040	.040	.050	.060	.050	.060	.080	.090
* H1 Hole Location	.156	.187	.187	.250	.181	.281	.620	.400
* H2 Hole Location	.156	.187	.250	.250	.156	.750	.750	.375
* D Hole Diameter	.128(2H)	.128(2H)	.128(3H)	.128(3H)	.161(2H)	.203(2H)	.344(2H)	.191(3H)

MATERIAL	Steel	Stainless Steel	Aluminum
Designation	S	C	A
Pin Type	1215	303	SS
Body	1010	304	5052
Spring	302	302	302
C-Ring	PH15-7 MO	PH15-7 MO	PH15-7 MO

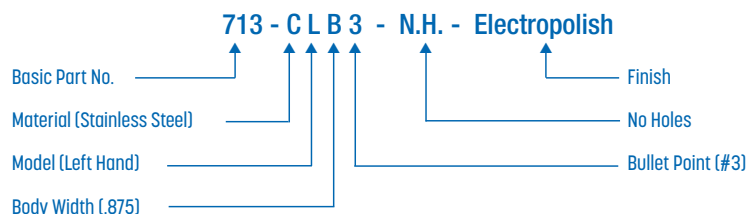
*All springs and c-rings are made with stainless steel.

MODEL	R = Right Hand	L = Left Hand	U = Unassembled
-------	----------------	---------------	-----------------

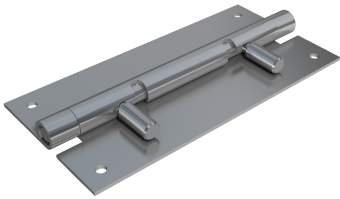
POINT STYLE	Other styles available including long extensions				
-------------	--	--	--	--	--

1		2		3		4		5	
	90° Cone		Ball		Bullet		Flat		60° Cone

ORDERING INFORMATION



Spring Release Hinge Series 700



Combining a hinge and a latch in a standard piece of hardware.

The 700 Series Spring Release Hinge has a pair of spring-loaded handles which pull toward the center to release the body or door from the keeper. Installation is simple and inexpensive using screws, rivets or by welding.

All styles are manufactured to close tolerances. End play and side play are held to a minimum, insuring a precision fit and smooth operation.

This latch is ideally suited for applications including aircraft compartments, computer equipment, shelving & storage units, and medical equipment.

BODY

L	Length	3"	4"	6"	Special
W	Width	1"	1"	1"	-
T	Thickness	.050	.050	.050	-
	DASH #	-3	-4	-6	-7

PIN

P	Pin Diameter	.250	Special
W	Metal Thickness	.050	-
	DASH #	-1	-7

HOLES

	None	Standard (2 Holes)	Special
DASH #	-0	-1	-7

MATERIAL

	Aluminum	Steel	Stainless
DASH #	-1	-2	-3

MODEL

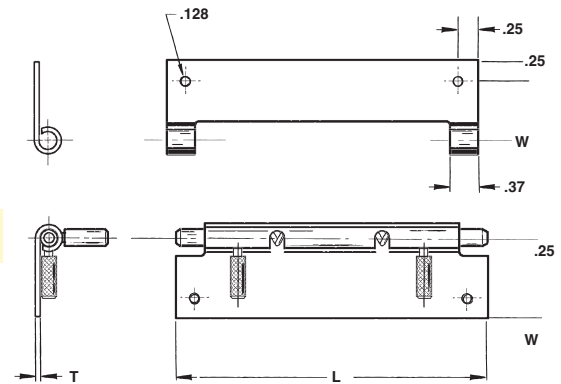
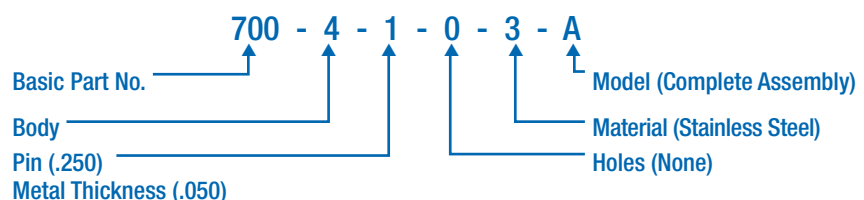
	Male	Female (Keeper)	Complete Assembly
	-1	-2	-A

FINISH

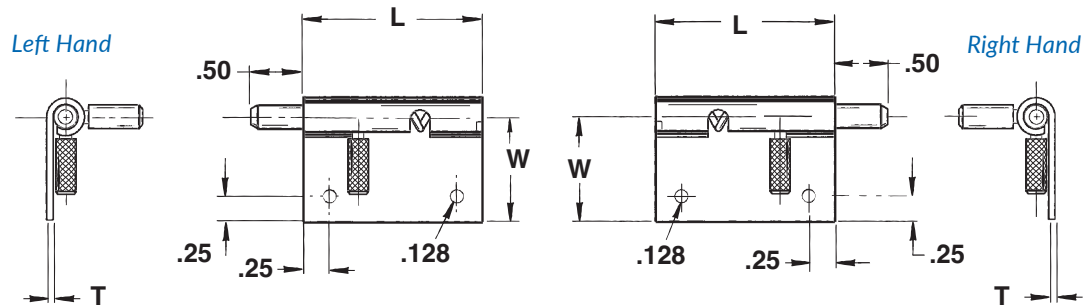
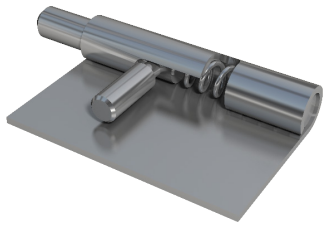
Most commercial finishes are available including zinc plate on steel, passivate and electropolishing on stainless steel, and anodize on aluminum.

ORDERING INFORMATION

Sample Part



Spring Release Hinge Series 701



Combining a hinge and a latch in a standard piece of hardware.

The 701 Series Spring Release Latch has a single handle, which pulls toward the center to release the body or door from the keeper. This relies on an engagement hole or slot in the adjoining surface. Installation is simple and inexpensive using screws, rivets or by welding.

All styles are manufactured to close tolerances. End play and side play are held to a minimum, ensuring a precision fit and smooth operation.

This latch is ideally suited for a variety of applications including aircraft compartments, computer equipment, shelving and storage units and medical equipment.

BODY

	Standard	Special
L Length	1.75	-
W Width	1.00	-
T Thickness	.050	-
DASH #	-1	-7

PIN

	Standard	Special
P Pin Diameter	.250	-
DASH #	-1	-7

HOLES

	None	Standard (2 Holes)	Special
DASH #	-0	-1	-7

MATERIAL

	Aluminum	Steel	Stainless
DASH #	-1	-2	-3

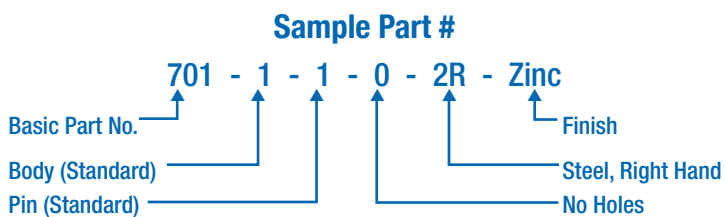
MODEL

Right (R) Left (L)

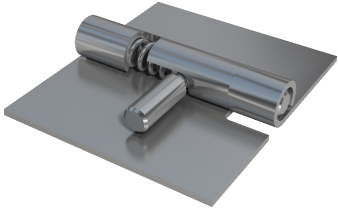
FINISH

Most commercial finishes are available including zinc plate on steel, passivate and electropolishing on stainless steel, and anodize on aluminum.

ORDERING INFORMATION



Spring Release Hinge Series 702



Combining a hinge and a latch in a standard piece of hardware.

The 702 Series Spring Release Hinge has a single handle which pulls toward the center to release the body or door from the keeper. Installation is simple and inexpensive using screws, rivets or by welding.

All styles are manufactured to close tolerances. End play and side play are held to a minimum, insuring a precision fit and smooth operation.

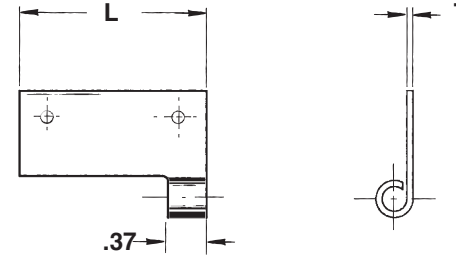
BODY

	Standard	Special
L Length	1.75	-
W Width	1.00	-
T Thickness	.050	-
DASH #	-1	-7

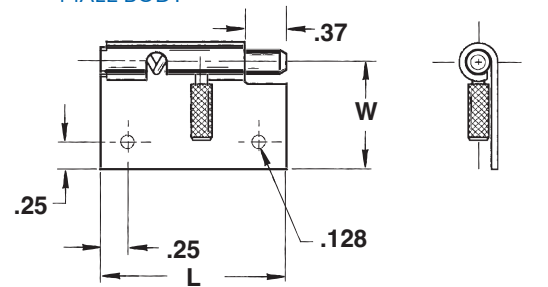
PIN

	Standard	Special
P Pin Diameter	.250	-
DASH #	-1	-7

Right Hand Model Pictured
FEMALE KEEPER



MALE BODY



HOLES

	None	Standard	Special
DASH #	-0	-1	-7

MATERIAL

	Aluminum	Steel	Stainless
DASH #	-1	-2	-3

MODEL

Right (R)

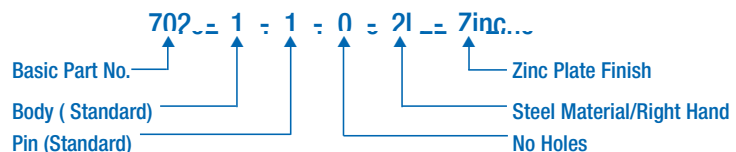
Left (L)

FINISH

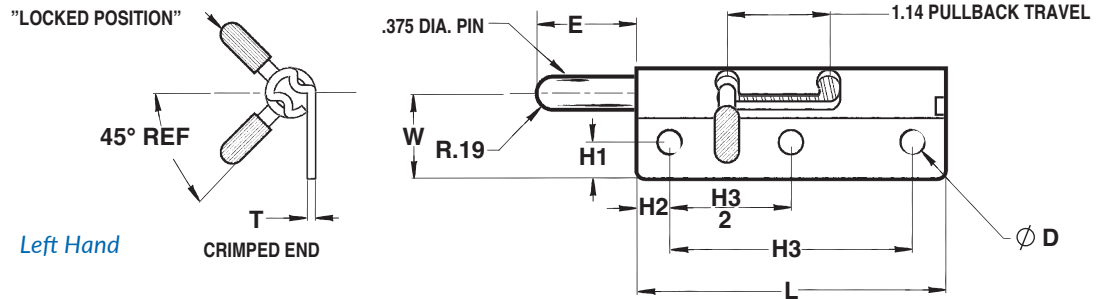
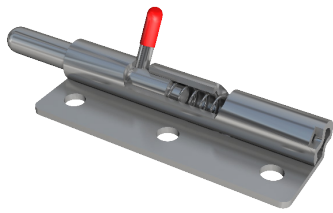
Most commercial finishes are available, including zinc on steel, passivate and electropolishing on stainless steel, and anodize on aluminum.

ORDERING INFORMATION

Sample Part



Spring Release Latch Series 780



The Paneloc 780 Spring Latch has a unique design that allows it to lock in an open or closed position.

It's a great option for applications that require a door or gate to be able to swing freely while in use, but otherwise be locked securely in place.

It features a ball point style $\frac{3}{8}$ " pin and is stocked in zinc-plated steel, though it can also be manufactured in stainless steel upon request. Installation is simple and inexpensive using screws or rivets.

All styles are manufactured to close tolerances. End play and side play are held to a minimum, ensuring a precision fit and smooth operation.

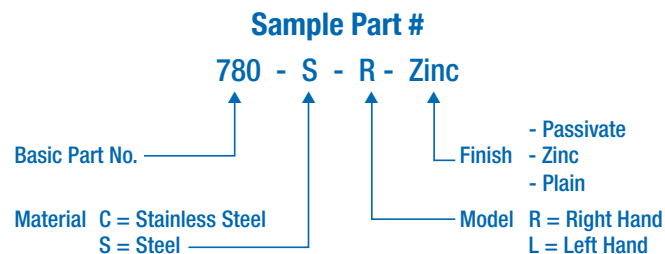
PIN			BODY		
P	Pin Diameter	.375	L	Length	3.50
* E	Extension	1.13	W	Width	.960
			T	Thickness	.093
			H1	Hole Location	.400
			H2	Hole Location	.380
			H3	Hole Location	2.75
			* D	Hole Diameter	.280

MATERIAL		MODELS	
Designation	C = Stainless S = Steel	R = Right Handed L = Left Handed U = Unassembled	

FINISH

Most commercial finishes are available, including zinc on steel, passivate and electropolishing on stainless steel, and anodize on aluminum.

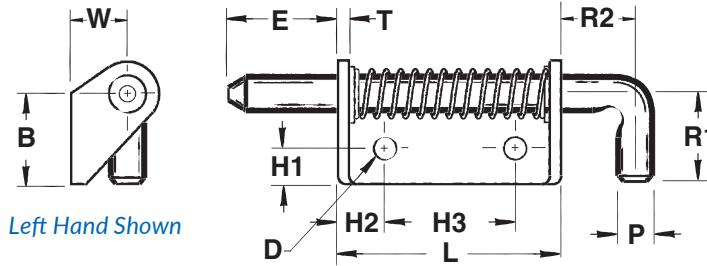
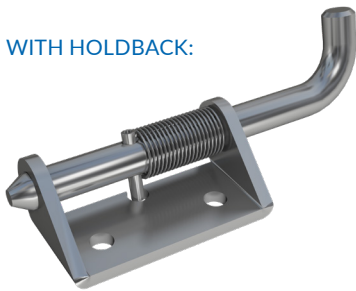
ORDERING INFORMATION



*Designates dimensions that can be altered to meet your specifications.

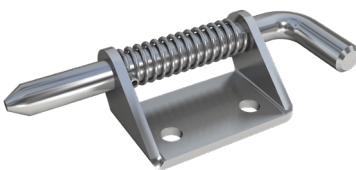
Heavy Duty Spring Latch Series 719-720

WITH HOLDBACK:



Left Hand Shown

WITHOUT HOLDBACK:



The Paneloc heavy-duty 719-720 Series spring latches are available in $\frac{3}{8}$ " and $\frac{1}{2}$ " pin diameters, respectively. These large, rugged latches are available in steel or stainless steel and have a closed knuckle for added durability and strength. They are ideally suited for truck bodies, utility vehicles, horse trailers and more. The offset body design provides more flexibility with placement on tight applications.

PART NUMBERS

PIN

		719	720
P	Pin Diameter	.375	.500
* E	Extension	1.250	1.500
R1	Handle Extension	1.187	1.218
R2	Handle Extension	.687	1.000

BODY

L	Length	2.000	3.000
H	Height	.656	.750
W	Width	1.12	1.250
T	Thickness	.125	.187
H1	Hole Location	.375	.500
H2	Hole Location	.437	.625
H3	Hole Location	1.125	1.750
* D	Hole Diameter	.265	.328

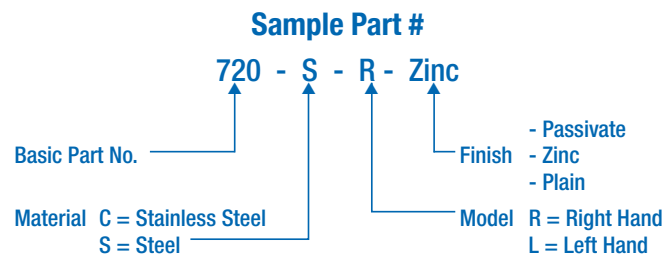
MATERIAL

Designation	C = Stainless S = Steel	MODELS R = Right Handed L = Left Handed U = Unassembled
-------------	----------------------------	--

FINISH

Most commercial finishes are available, including zinc plate on steel, passivate and electropolishing on stainless steel.

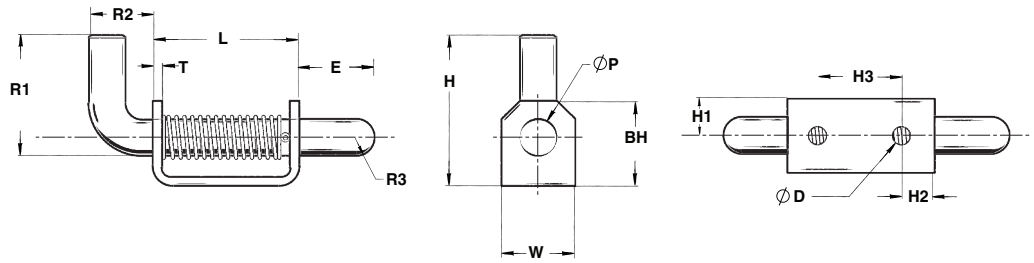
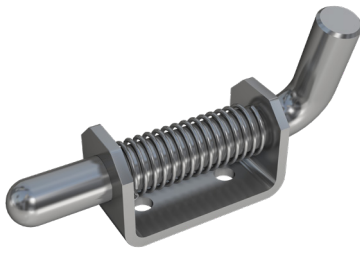
ORDERING INFORMATION



Special forms, offsets, hole sizes or welding projections are available to your specifications. Extension retracts 1.35", so that it cannot fully retract into body.

* Designates dimensions that can be altered to meet your specifications.

Heavy Duty Spring Latch Series 784



The 784 Series Spring Latch is one of the strongest, most heavy-duty latches in Paneloc's product line, with a 3/4" pin and closed knuckle for added durability and strength.

This part is available with a cable-ready pin or handle. The 784 is available with two holes, pem studs or in a no-hole version for welding. It is ideally suited for truck and trailer bodies and railcars.

PIN			BODY			
P	Pin Diameter	.750	W	Width	1.50	
*	E	Extension	1.56	BH	Body Height	1.75
R2	Handle Extension	1.87	L	Length	3.00	
DH	Handle Hole	.437	H	Height	1.00	
	T	Material Thickness			.187	

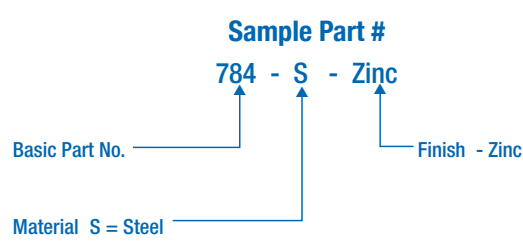
MATERIAL

Designation	S = Steel
-------------	-----------

FINISH

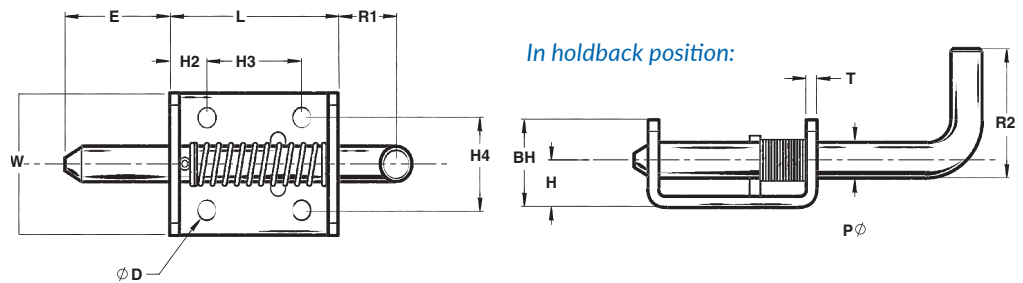
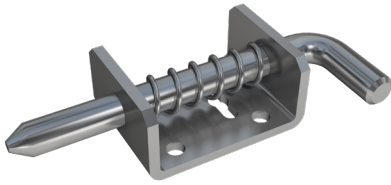
Available in plain steel, or with zinc plating.

ORDERING INFORMATION



*Please specify hole and handle requirements when placing order.

Heavy Duty Spring Latch Series 785



The Paneloc 785 Series Spring Latch features a $\frac{3}{8}$ " pin with a holdback.

These large rugged latches feature a closed knuckle for added durability and strength making them well suited for truck and trailer bodies.

PIN			BODY		
P	Pin Diameter	.375	L	Length	2.00
* E	Extension	1.25	W	Width	1.50
R1	Handle Extension	.690	T	Material Thickness	.125
R2	Handle Extension	1.38	H	Height	.500
			BH	Body Height	.940
			H2	Hole Location	.440
			H3	Hole Location	1.125
			H4	Hole Location	1.00
			* D	Hole Diameter	.218

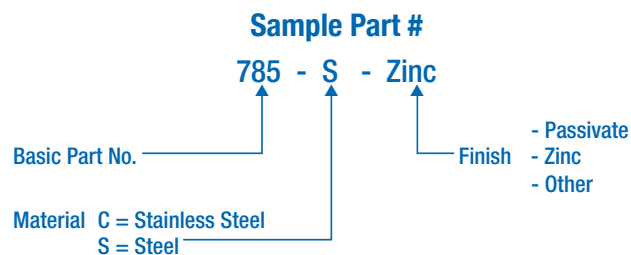
MATERIAL

Readily available in plain steel with a zinc pin, though it can also be purchased in stainless.

FINISH

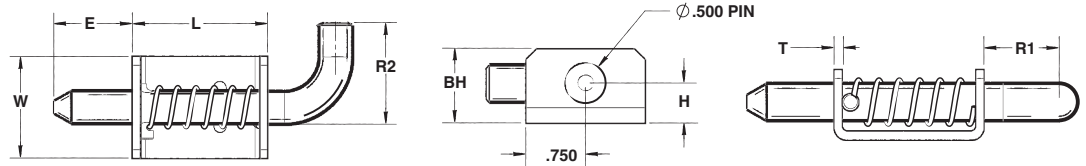
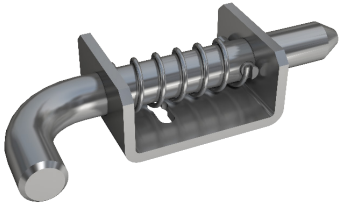
Most commercial finishes are available, including zinc on steel, passivate and electropolishing on stainless steel.

ORDERING INFORMATION



*Designates dimensions that can be altered to meet your specifications.
Special forms, hole sizes or welding projections are available to your specifications.

Heavy Duty Spring Latch Series 787



The Paneloc 787 Series Spring Latch features a 1/2" pin with a holdback.

These large rugged latches feature a closed knuckle for added durability and strength making them well suited for truck and trailer bodies.

PIN		BODY		
P	Pin Diameter	.500	L Length	2.00
* E	Extension	1.16	W Width	1.50
R1	Handle Extension	1.00	T Material Thickness	.125
R2	Handle Extension	1.50	H Height	.500
		BH	Body Height	.940

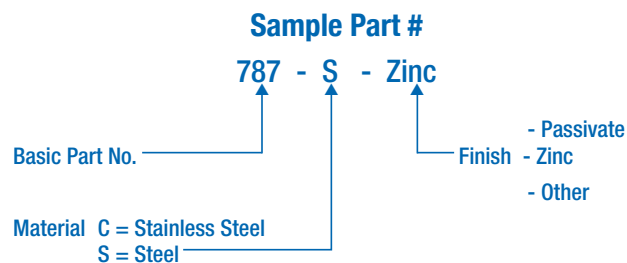
MATERIAL

Readily available in plain steel, though it can also be purchased in stainless.

FINISH

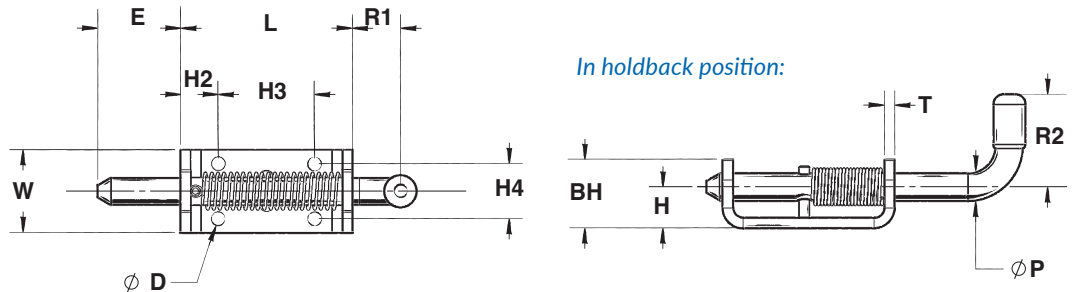
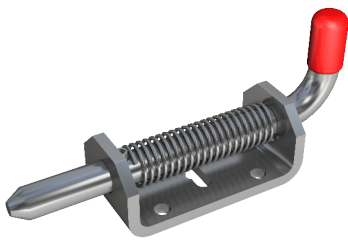
Most commercial finishes are available, including zinc on steel, passivate and electropolishing on stainless steel.

ORDERING INFORMATION



*Designates dimensions that can be altered to meet your specifications.
Special forms, hole locations and sizes or welding projections are available to your specifications.

Heavy Duty Spring Latch Series 789



The Paneloc 789 Series Spring Latch features a 1/2" pin with a holdback.

These large rugged latches feature a closed knuckle for added durability and strength, making them well-suited for truck and trailer bodies.

PIN			BODY		
P	Pin Diameter	.500	L	Length	3.12
* E	Extension	1.50	W	Width	1.50
R1	Handle Extension	.870	T	Material Thickness	.187
R2	Handle Extension	1.68	H	Height	.750
			BH	Body Height	1.25
			H2	Hole Location	.690
			H3	Hole Location	1.75
			H4	Hole Location	1.00
			* D	Hole Diameter	.250

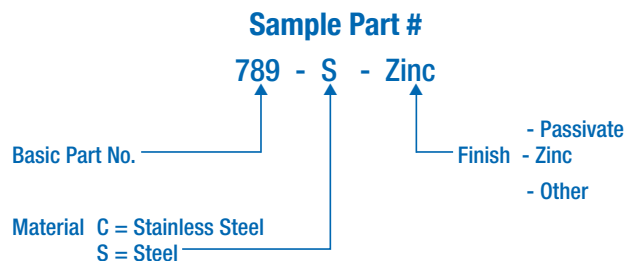
MATERIAL

Readily available in plain steel with zinc plating, though it can also be purchased in stainless.

FINISH

Most commercial finishes are available, including zinc on steel, passivate and electropolishing on stainless steel.

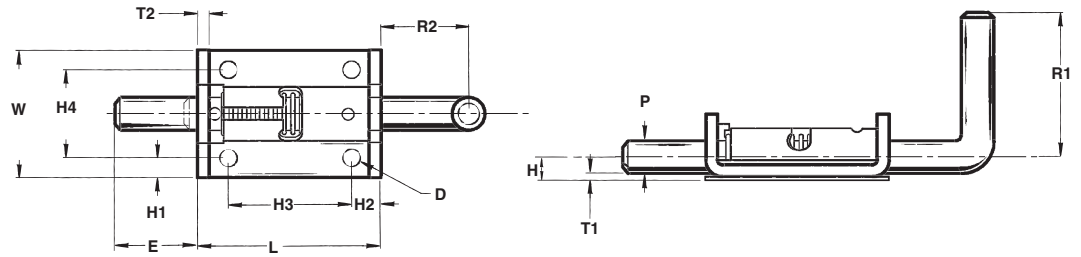
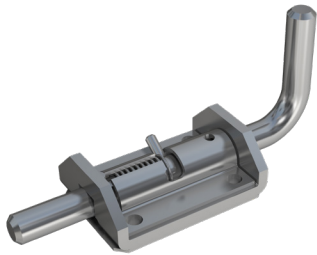
ORDERING INFORMATION



*Designates dimensions that can be altered to meet your specifications.
Special forms, hole sizes or welding projections are available to your specifications.

Heavy Duty Lock Latch Series 779

Design locks open and locks closed



The Paneloc 779 Series Spring Latch features a ½" pin diameter and a closed knuckle for added durability and strength.

A unique feature of this part is its cover plate which enables the latch to lock open or lock closed.

PIN			BODY		
P	Pin Diameter	.500	* L	Length	2.88
* E	Extension	1.312	W	Width	2.00
			T1	Thickness	.120
			T2	Thickness	.140
			R1	Handle Lenth	2.25
			R2	Handle Extension	1.38
			H	Height	.375
			H1	Hole Location	.310
			H2	Hole Location	.450
			H3	Hole Location	1.937
			H4	Hole Location	1.380
			* D	Hole Diameter	.270

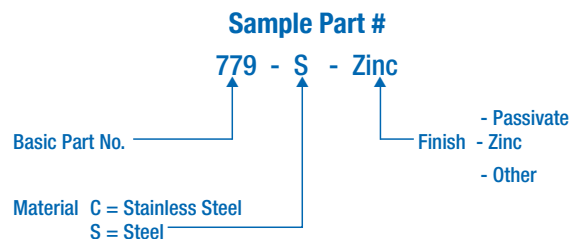
MATERIAL

Designation: C = Stainless S = Steel

FINISH

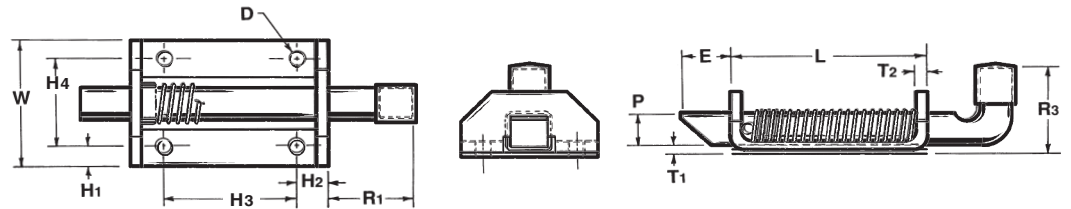
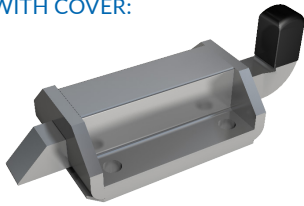
Most commercial finishes are available, including zinc plate on steel, and passivate or electropolishing on stainless steel.

ORDERING INFORMATION



Slam Latches 707-709 Series

STANDARD VERSION
WITH COVER:

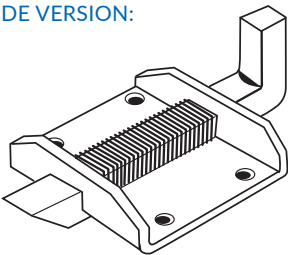


These rugged slam latches are ideal for applications that require a quick and effortless locking mechanism, such as truck and trailer doors, drawers and tailgates, as well as medical and farm equipment.

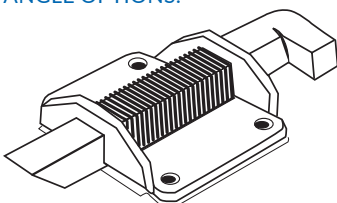
To engage simply "slam" the door shut. The spring-loaded pin is square with an angled edge that smoothly retracts as it engages with the keeper and then extends back into place in a locked position. To release, grip the handle and pull back.

Available in 3 sizes: 7/16", 3/8" and 1/2" pins

WIDE VERSION:



MULTIPLE HANDLE
ANGLE OPTIONS:



SLAM-LATCH PART NUMBERS

		707	708	708W	709	709W
PIN						
P	Pin Size	.375	.437	.437	.500	.500
* E	Extension	.562	.750	.750	.750	.750
R1	Handle Length	.812	1.000	1.00	1.250	1.25
R3	Handle Extension	1.000	1.250	1.25	1.375	1.38
BODY						
L	Length	1.500	2.000	2.00	2.875	2.875
* W	Width	1.250	1.625	2.19	2.000	2.66
T1	Thickness	.090	.125	.125	.190	.190
T2	Thickness	.090	.120	.125	.190	.187
* H1	Hole Location	.187	.250	.250	.312	.300
* H2	Hole Location	.375	.375	.38	.468	.47
H3	Hole Location	.750	1.250	1.250	1.937	1.937
H4	Hole Location	.875	1.125	1.687	1.375	2.060
* D	Hole Diameter	.171	.203	.203	.265	.265

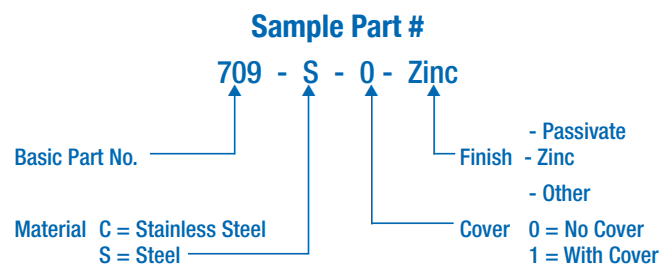
MATERIAL

Designation: C = Stainless S = Steel

FINISH

Most commercial finishes are available, including zinc plate on steel, passivate and electropolishing on stainless steel.

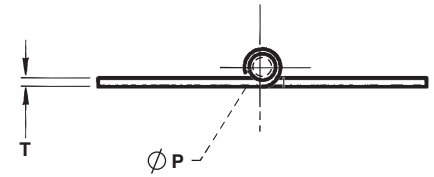
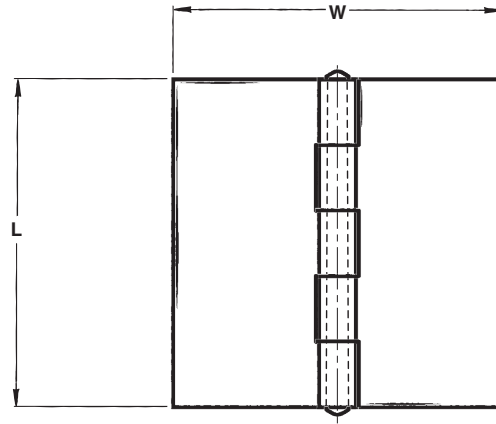
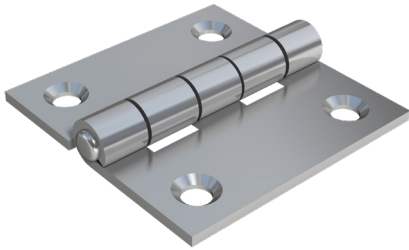
ORDERING INFORMATION



Special forms, offsets, hole sizes or welding projections are available to your specifications.

*Designates dimensions that can be altered to meet your specifications.

Butt Hinges



Paneloc's butt hinges are available in a broad range of sizes, types and configurations to meet virtually any application's needs.

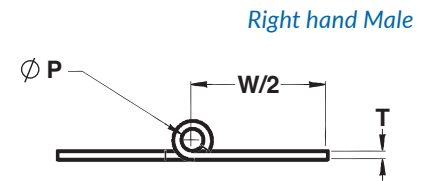
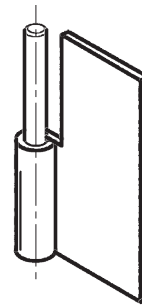
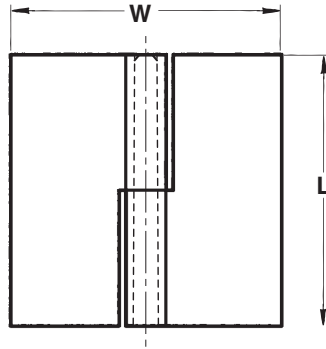
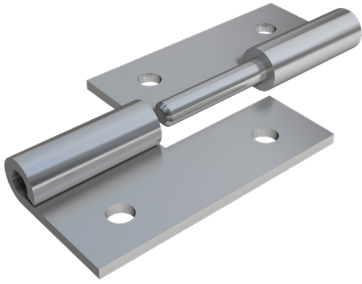
Our hinges feature a 5-knuckle configuration with a non-removable spun pin for added strength and security, and minimal side and end play.

Most hinges are stocked without holes or with two holes per leaf, and are readily available in steel or stainless steel. Common finishes include black oxide or zinc with clear or yellow chromate on steel; passivate or electropolish for stainless steel, and anodize on aluminum.

Custom piercing, trimming and removable pins can be requested to suit your needs.

PART NUMBER	THICKNESS	LENGTH	WIDTH	PIN DIAMETER
418	.050	1.5	1.5	.125
425	.060	2.0	2.0	.125
500	.062	2.5	2.5	.125
354	.070	3.0	1.5	.156
364	.072	3.0	2.0	.156
498	.080	2.0	2.0	.187
674	.080	2.5	2.5	.187
673	.080	2.5	2.5	.250
693	.078	3.0	3.0	.187
688	.093	3.0	3.0	.250
731	.125	2.5	2.5	.250
691	.125	3.0	3.0	.250

Slip Joint Hinges



Slip Joint Hinges, also known as "take-apart" hinges, are well-suited for applications such as removable doors and panels.

They are comprised of a male leaf with a fixed pin and female leaf with no pin, and available in a right hand or left hand configuration.

These parts are readily available in steel or stainless steel, though they can be reproduced from virtually any desired metal or alloy. Most common finishes include zinc on steel, passivate and electropolish on stainless, and anodize on aluminum.

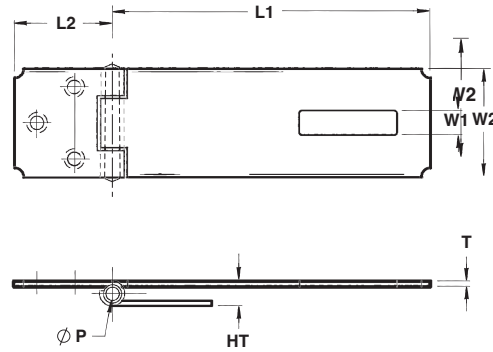
Most hinges are stocked without holes or with two holes per leaf, and custom hole patterns can also be requested.

PART NUMBER	THICKNESS	LENGTH	WIDTH	PIN DIAMETER
737	.050	1.50	1.44	.120
371	.060	1.50	1.50	.125
344	.062	2.00	1.50	.125
631	.062	2.00	2.00	.187
588	.072	2.00	1.68	.125
614	.075	2.50	1.88	.187
614W	.075	2.50	2.50	1.87
589	.080	2.00	1.68	.187
589W	.080	2.00	2.00	1.87
728	.080	2.00	1.50	.250
372	.090	2.50	2.50	.250
749	.090	3.00	2.00	.187
746	.093	2.50	2.50	.187
606	.093	3.00	3.00	.250
753	.093	4.00	3.00	.250

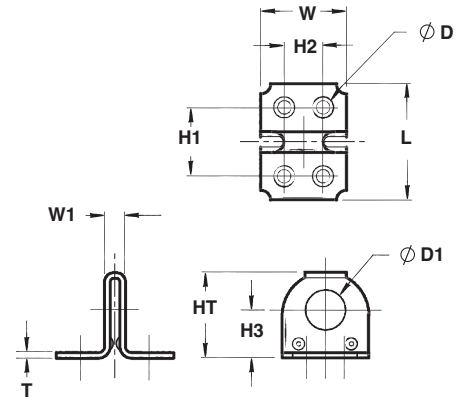
Hasps and Staples



Steel Hasp



Steel Staple

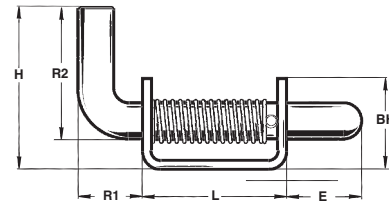
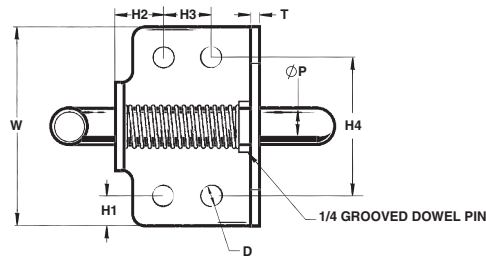
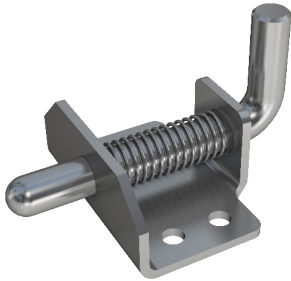


With their sturdy design and strong steel construction, Paneloc's Hasps and Staples work together to secure gates, doors, lids, hatches and more. They can be purchased with or without holes, in plain steel or stainless steel with corrosion-resistant electropolish. Mounting hardware and padlocks are not included.

STAPLES	LENGTH	WIDTH	HEIGHT	W1	THICKNESS	HOLE
110	1.00	.690	.720	.190	.040	#6 SCREW
115	1.44	1.06	1.06	.250	.060	#8 SCREW

HASPS	L1	L2	W1	W2	PIN DIAMETER	HOLE
135	3.34	1.34	.343	1.50	.187	.075
145	4.34	1.34	.343	1.50	.187	.075
160	6.00	2.75	.343	1.87	.187	.104

Heavy Duty Spring Latch Series 788



The 788 Series Spring Latch is the strongest, most rugged latch in Paneloc's product line, with a 3/4" diameter pin, easy-to-grip handle and closed knuckle for added durability and strength.

The body includes four mounting holes for secure installation. This part is ideally suited for heavy-duty use on trucks, railcars, and trailer bodies.

PIN			BODY			
P	Pin Diameter	.750	L	Length	3.00	
*	E	Extension	1.562	W	Width	4.125
	R1	Handle Extension	1.312	T	Material Thickness	.187
	R2	Handle Extension	2.750	H	Height	3.375
				BH	Body Height	1.875
				H1	Hole Location	.621
				H2	Hole Location	1.00
				H3	Hole Location	1.00
				H4	Hole Location	2.875
				D	Hole Diameter	.437

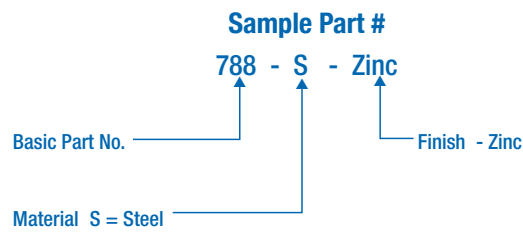
MATERIAL

Designation S = Steel

FINISH

Available in plain steel, or with zinc plating.

ORDERING INFORMATION



*Designates dimensions that can be altered to meet your specifications. Special forms, hole locations and sizes or welding projections are available to your specifications.