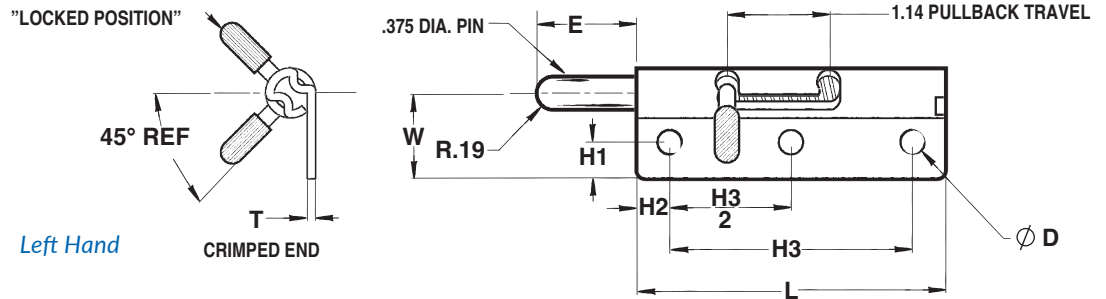
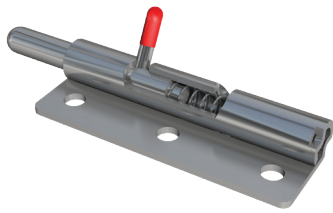


Spring Release Latch Series 780



The Paneloc 780 Spring Latch has a unique design that allows it to lock in an open or closed position.

It's a great option for applications that require a door or gate to be able to swing freely while in use, but otherwise be locked securely in place.

It features a ball point style $\frac{3}{8}$ " pin and is stocked in zinc-plated steel, though it can also be manufactured in stainless steel upon request. Installation is simple and inexpensive using screws or rivets.

All styles are manufactured to close tolerances. End play and side play are held to a minimum, ensuring a precision fit and smooth operation.

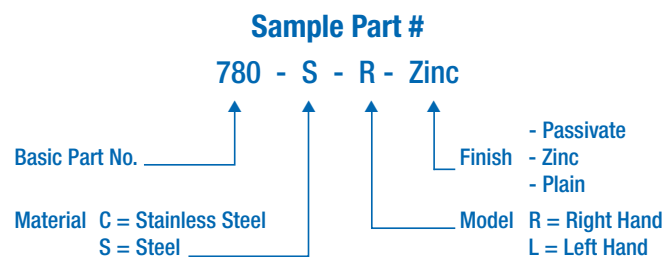
PIN			BODY		
P	Pin Diameter	.375	L	Length	3.50
* E	Extension	1.13	W	Width	.960
			T	Thickness	.093
			H1	Hole Location	.400
			H2	Hole Location	.380
			H3	Hole Location	2.75
			* D	Hole Diameter	.280

MATERIAL		MODELS	
Designation	C = Stainless	R = Right Handed	
	S = Steel	L = Left Handed	
		U = Unassembled	

FINISH

Most commercial finishes are available, including zinc on steel, passivate and electropolishing on stainless steel, and anodize on aluminum.

ORDERING INFORMATION



*Designates dimensions that can be altered to meet your specifications.