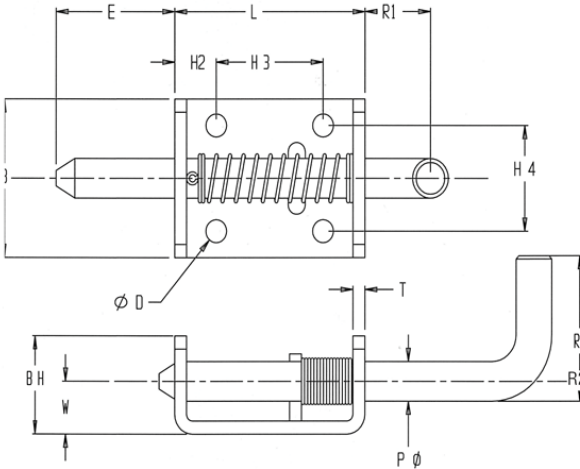


## Heavy Duty Spring Latch Series 785



The Paneloc 785 Series Spring Latch features a 3/8" pin with a holdback.

These large rugged latches feature a closed knuckle for added durability and strength making them well suited for truck and trailer bodies.

### PIN

P	Pin Diameter	.375
*	E Extension	1.25
R1	Handle Extension	.69
R2	Handle Extension	1.38

### BODY

L	Length	1.50
W	Width	1.50
T	Material Thickness	.125
H	Height	.5
BH	Body Height	.94
H2	Hole Location	.440
H3	Between Centers	1.125
H4	Between Centers	1.00
*	D Hole Diameter	.218

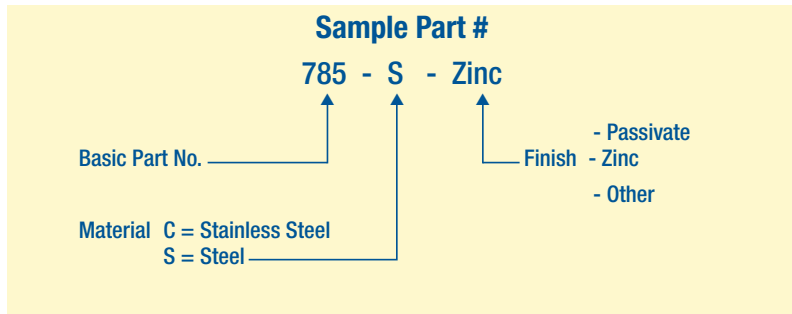
### MATERIAL

Readily available in plain steel, though it can also be purchased in stainless.

### FINISH

Most commercial finishes are available, including zinc on steel, passivate and electropolishing on stainless steel.

### ORDERING INFORMATION



\*Designates dimensions can be altered to meet your specifications.  
Special forms, hole sizes or welding projections are available to your specifications.