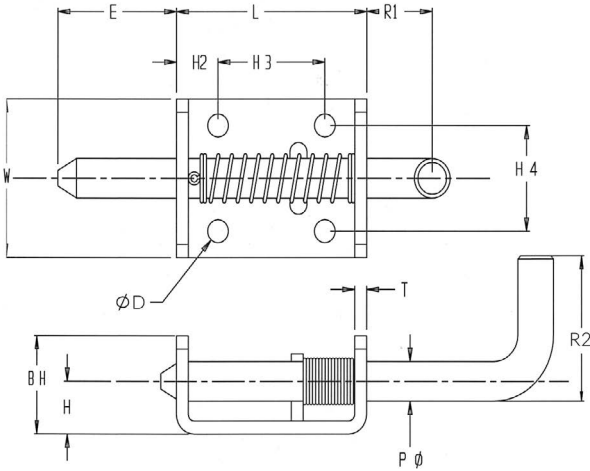


Heavy Duty Spring Latch Series 785



The Paneloc 785 Series Spring Latch features a 3/8" pin with a holdback.

These large rugged latches feature a closed knuckle for added durability and strength making them well suited for truck and trailer bodies.

PIN

P	Pin Diameter	.375
*	E Extension	1.25
R1	Handle Extension	.690
R2	Handle Extension	1.38

BODY

L	Length	2.00
W	Width	1.50
T	Material Thickness	.125
H	Height	.500
BH	Body Height	.940
H2	Hole Location	.440
H3	Hole Location	1.125
H4	Hole Location	1.00
*	D Hole Diameter	.218

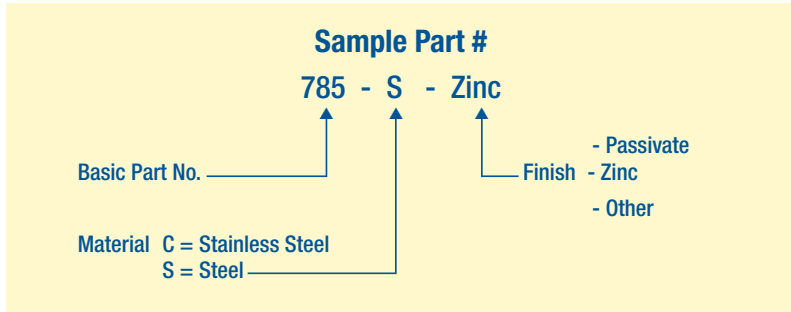
MATERIAL

Readily available in plain steel, though it can also be purchased in stainless.

FINISH

Most commercial finishes are available, including zinc on steel, passivate and electropolishing on stainless steel.

ORDERING INFORMATION



*Designates dimensions can be altered to meet your specifications.
Special forms, hole sizes or welding projections are available to your specifications.