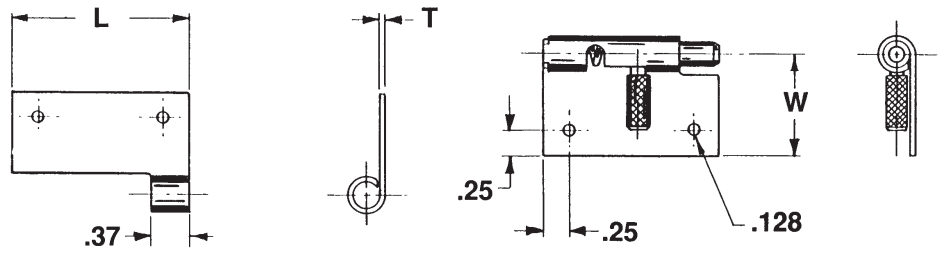


Spring Release Hinge Series 702

Right Hand



Combining a hinge and a latch in a standard piece of hardware.

The Spring Release Hinge has either a pair of spring-loaded handles or a single handle, which pulls toward the center to release the body or door from the keeper. An alternate style relies on an engagement hole or slot in the adjoining surface. Installation is simple and inexpensive using screws, rivets or by welding.

All styles are manufactured to close tolerances. End play and side play are held to a minimum, insuring a precision fit and smooth operation.

BODY

	Standard	Special
L Length	1.75	-
W Width	1.00	-
DASH #	-1	-7

PIN

	Standard	Special
P Pin Diameter	.250	.281 Special
T Metal Thickness	.050	.062 -
DASH #	-1	-2 -7

HOLES (2)

	None	Standard	Special
DASH #	-0	-1	-7

MATERIAL

	Aluminum	Steel	Stainless
DASH #	-1	-2	-3

MODELS

Right	Left
-------	------

FINISH

Most commercial finishes are available, including zinc and cadmium on steel, passivate and electropolishing on stainless steel, and anodize on aluminum.

ORDERING INFORMATION

Sample Part #

702 - 1 - 1 - 0 - 2L - Cadmium

Model \uparrow 702 \uparrow 1 \uparrow 1 \uparrow 0 \uparrow 2L \uparrow Cadmium

1.75"L x 1"W \uparrow 1 \uparrow 1 \uparrow 0 \uparrow 2L \uparrow Cadmium Plate

.250 Pin \uparrow 1 \uparrow 1 \uparrow 0 \uparrow 2L \uparrow Steel, Left Hand

.050 Thickness \uparrow 1 \uparrow 1 \uparrow 0 \uparrow 2L \uparrow No Holes